

Eton College King's Scholarship Examination 2022

ENGLISH

(One and a half hours)

Remember to write your candidate number on every sheet of answer paper used.

You must answer all questions.

You are advised to spend about ten minutes reading the extract preceding Questions 1 and 2 before answering the questions.

Do not turn over until told to do so.

Read the extract slowly and carefully and then answer **ALL** the questions that follow.

*This is an excerpt from a much longer poem of 158 verses known as *The Rubaiyat*. The original poem was written in Persian in the 11th century by an astronomer, mathematician and poet called Omar Khayyam. The version you are reading is a translation by a Victorian poet called Edward FitzGerald, written in 1859. By the early 20th century, FitzGerald's translation was arguably the most influential poem in the English language.*

*The poem is sometimes viewed as a *carpe diem* (seize the day) poem, although others view it as a despairing poem about the transience of life. This excerpt from the poem describes the speaker who has found himself inside a shop at evening.*

LIX.

Listen again. One Evening at the Close
Of Ramazan, ere the better Moon arose,
In that old Potter's Shop I stood alone
With the clay Population round in Rows.

LX.

And strange to tell, among that Earthen Lot
Some could articulate, while others not:
And suddenly one more impatient cried—
“Who is the Potter, pray, and who the Pot?”

LXI.

Then said another—“Surely not in vain
My substance from the common Earth was ta'en,
That He who subtly wrought me into Shape
Should stamp me back to common Earth again.”

LXII.

Another said—“Why, ne'er a peevish Boy
Would break the Bowl from which he drank in Joy;
Shall He that made the Vessel in pure Love
And Fancy, in an after Rage destroy!”

LXIII.

None answer'd this; but after Silence spake
A Vessel of a more ungainly Make:
“They sneer at me for leaning all awry;
What? did the Hand then of the Potter shake?”

LXIV.

Said one—“Folks of a surly Tapster tell,
And daub his Visage with the Smoke of Hell;
They talk of some strict Testing of us—Pish!
He's a Good Fellow, and 'twill all be well.”

LXV.

Then said another with a long-drawn Sigh,
“My Clay with long oblivion is gone dry:
But, fill me with the old familiar Juice,
Methinks I might recover by-and-by!”

LXVI.

So, while the Vessels one by one were speaking,
One spied the little Crescent all were seeking:
And then they jogg’d each other, “Brother! Brother!
Hark to the Porter’s Shoulder-knot a-creaking!”

QUESTION ONE

- (a) How does the structure of the excerpt contribute to its meaning?
Make sure you quote and use evidence from the text to support your ideas. [15 marks]
- (b) What in your view is the importance of the setting of the excerpt?
Make sure you quote and use evidence from the text to support your ideas. [10 marks]
- (c) This excerpt from the poem has often been read as an allegory. How would you explain the allegory?
Make sure you quote and use evidence from the text to support your ideas. [10 marks]

[Total mark for Question 1: 35]

QUESTION TWO

Write the next two stanzas of the excerpt. [15 marks]

[Total mark for Question 2: 15]

QUESTION THREE

START A NEW SHEET OF PAPER NOW.

You should allow approximately 35 minutes to respond to this question.

Source : Pictures of book covers with titles and authors redacted.

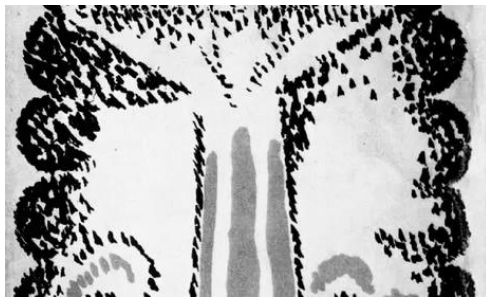
1



2



3



4



Look at the Source on the facing page.

This question does not assume, and its assessment will not reward additional non-Source-based knowledge of the images in the Source.

Now answer the following:

- (a) Which of these book covers appeals to you most and why?
[4 marks]
- (b) Referring to all four images, briefly outline what you believe the genre (e.g. science fiction, detective, adventure, historical fiction *etc*) of each of these novels to be. Candidates will be given credit based upon the strength of their argument rather than for correctly predicting the genre of a particular image.
[8 marks]
- (c) In your opinion, should one ever judge a book by its cover? You should range beyond the Source in your response.
[13 marks]

[Total mark for Question 3: 25]

END OF PAPER