

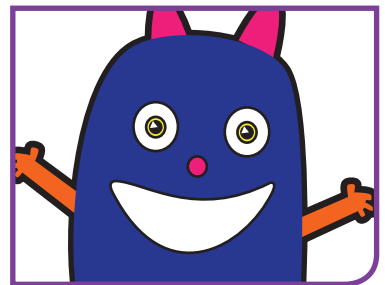
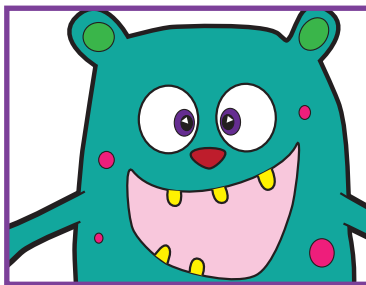
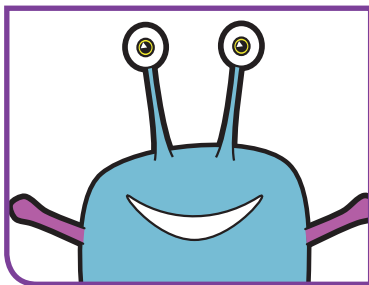
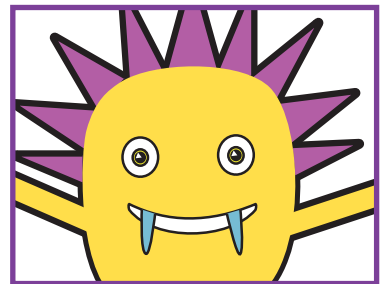
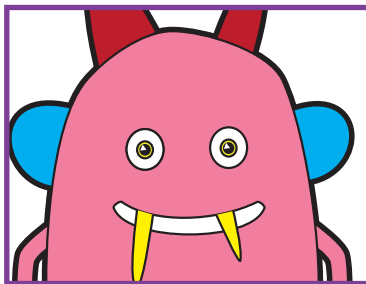
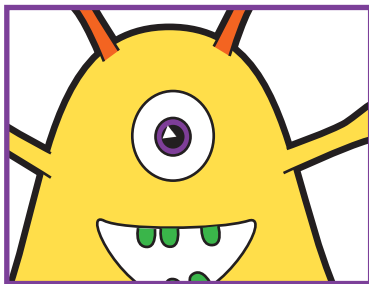
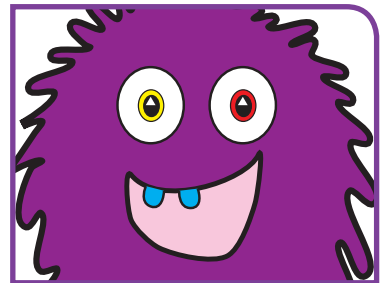
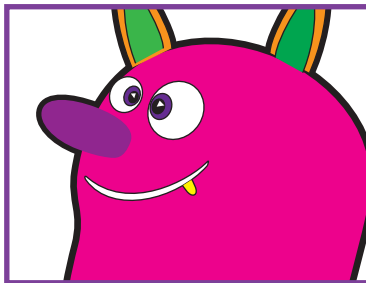
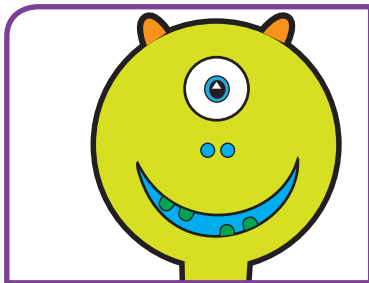
Ph

KEY STAGE
1

Phonics

Phonics screening check

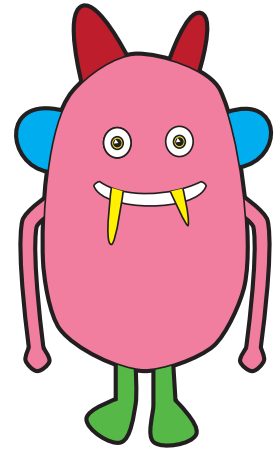
Children's materials



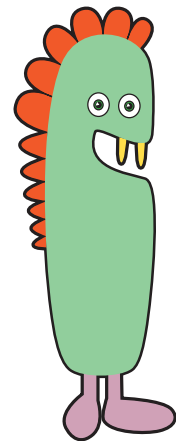
2014

National curriculum assessments

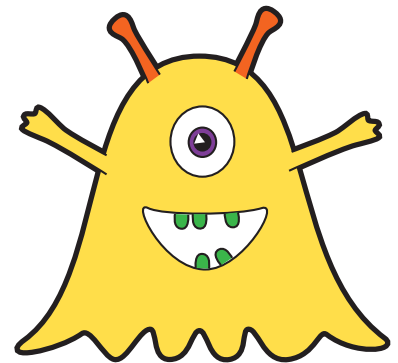
vol



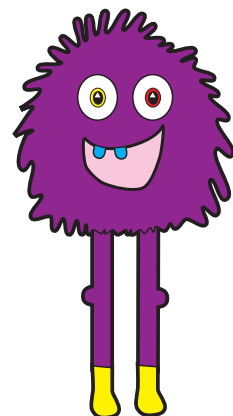
teg



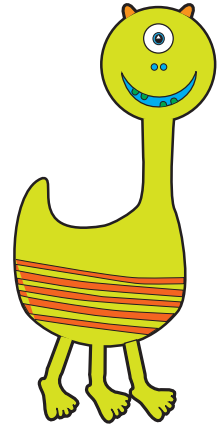
jat



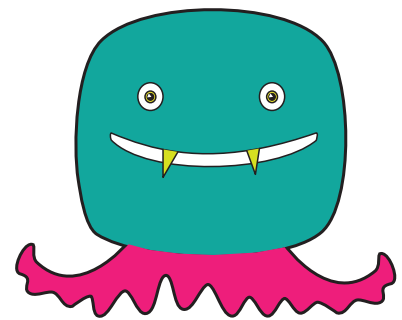
ind



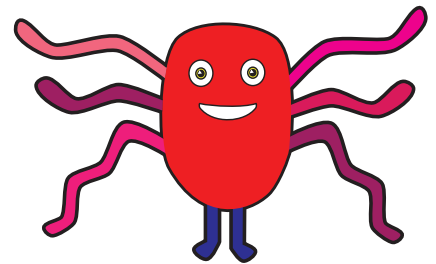
tull



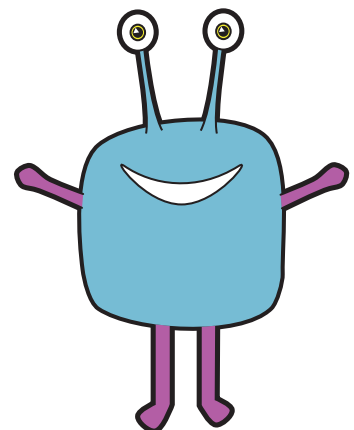
shog



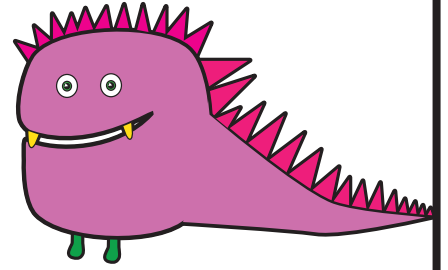
foid



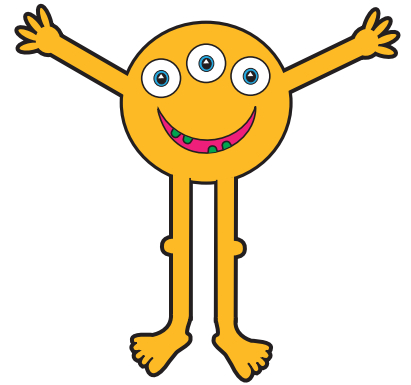
thard



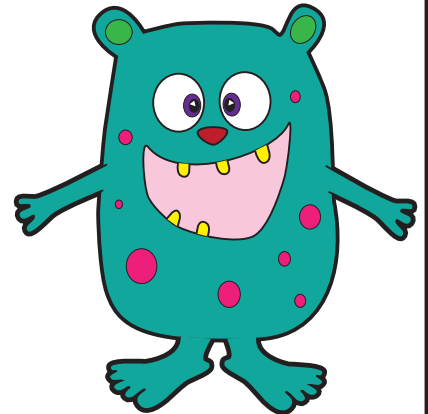
frem



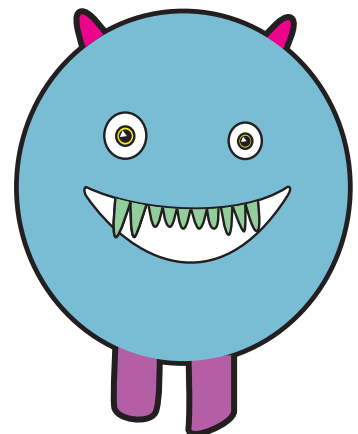
cloin



bulm



harnd



quiz

back

doom

short

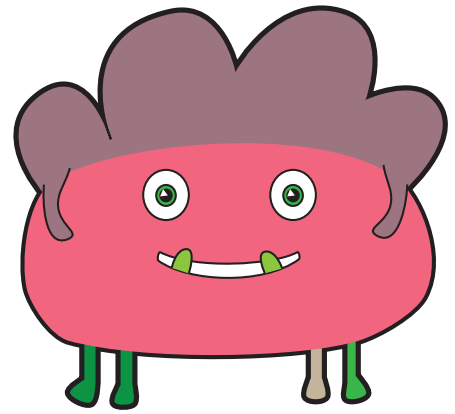
freed

dress

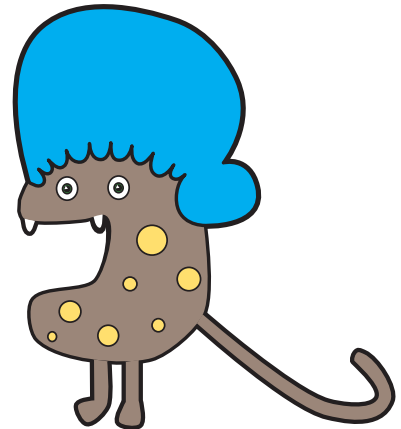
fund

think

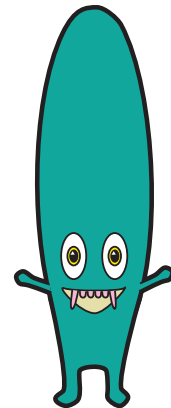
jair



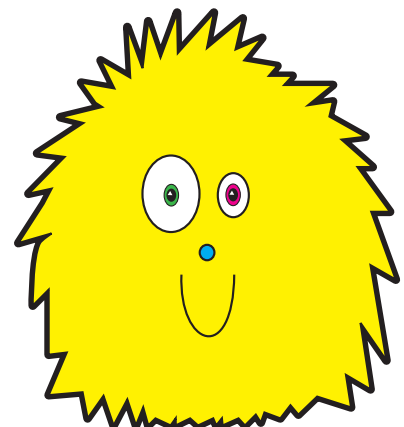
clain



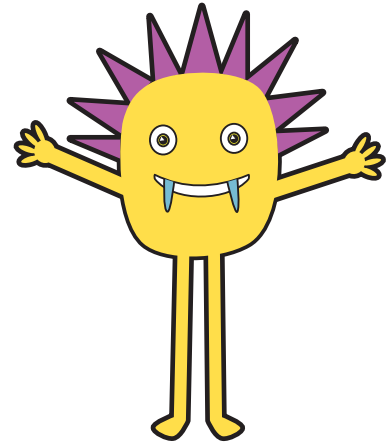
yewn



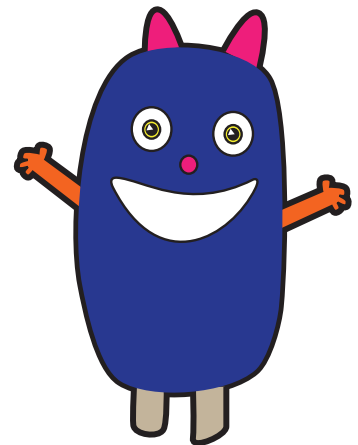
tabe



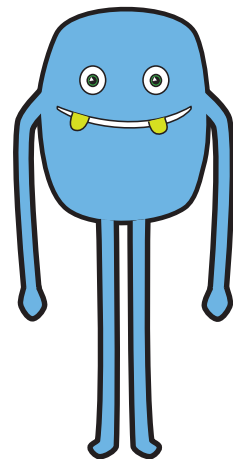
clisk



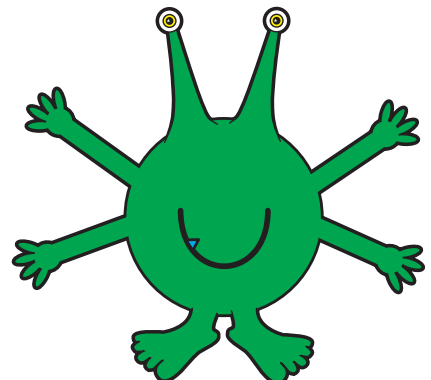
thrand



strad



scroy



nigh

brown

main

rude

drink

crowds

splat

stripe

comic

giving

pumpkin

fighters

[BLANK PAGE]

Please do not write on this page.

[BLANK PAGE]

Please do not write on this page.

2014 Key Stage 1 Phonics screening check: children's materials
Print version product code: STA/14/7079/p ISBN: 978-1-78315-307-7
Electronic PDF version product code: STA/14/7079/e ISBN: 978-1-78315-312-1

For more copies

Additional printed copies of this booklet are not available. It can be downloaded from www.gov.uk/government/publications.

© Crown copyright and Crown information 2014

Re-use of Crown copyright and Crown information in test materials

Subject to the exceptions listed below, the test materials on this website are Crown copyright or Crown information and you may re-use them (not including logos) free of charge in any format or medium in accordance with the terms of the Open Government Licence v2.0 which can be found on the National Archive website and accessed via the following link: www.nationalarchives.gov.uk/doc/open-government-licence/version/2.

Exceptions - third party copyright content in test materials

You must obtain permission from the relevant copyright owners, as listed in the '2014 key stage 2 test materials copyright report', for re-use of any third party copyright content which we have identified in the test materials, as listed below. Alternatively you should remove the unlicensed third party copyright content and/or replace it with appropriately licensed material.

Third party content

These materials contain no third party copyright content.

If you have any queries regarding these test materials contact the national curriculum assessments helpline on 0300 303 3013 or email assessments@education.gov.uk.