

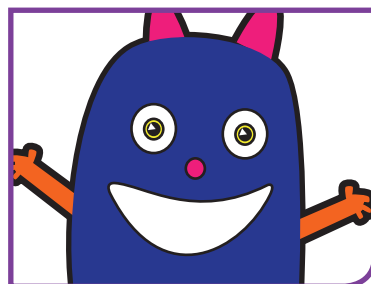
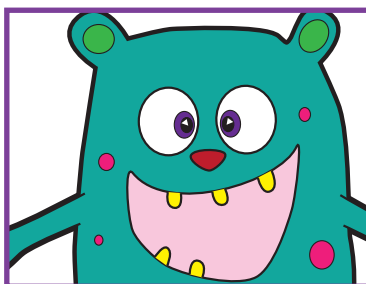
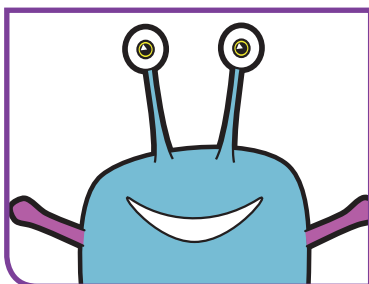
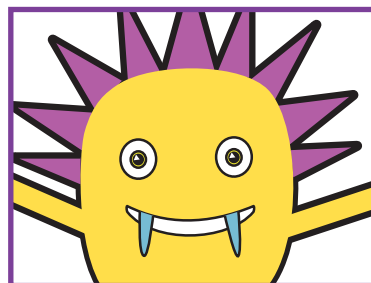
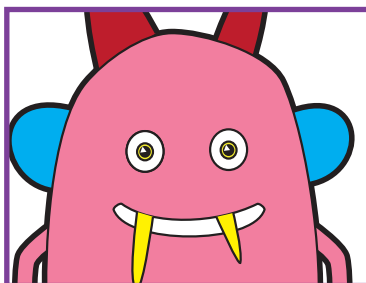
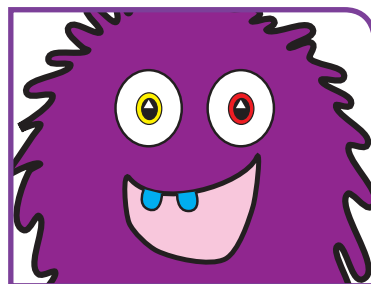
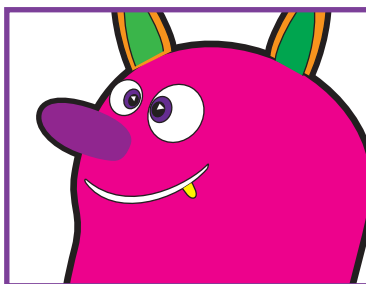
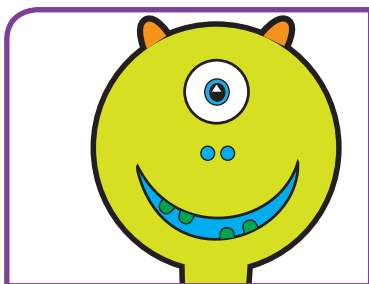
Ph

KEY STAGE  
1

Phonics

## Phonics screening check

Pupils' materials

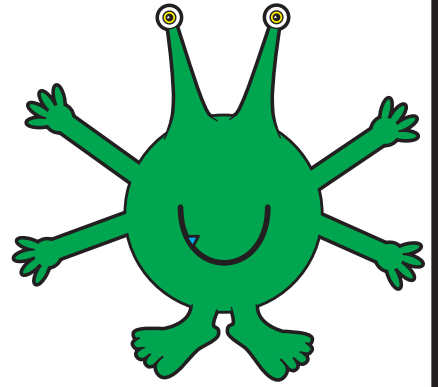


National curriculum assessments

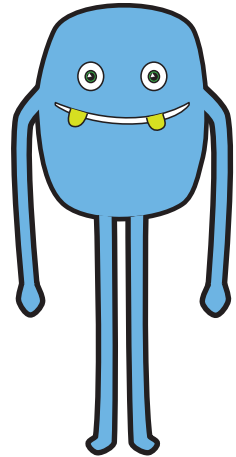
JUNE 2015



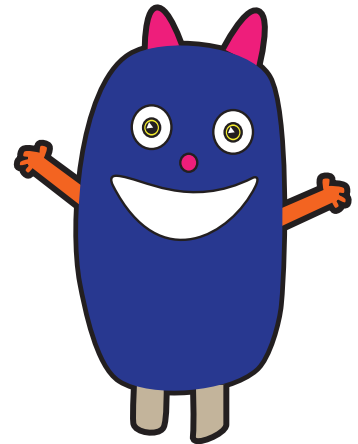
fip



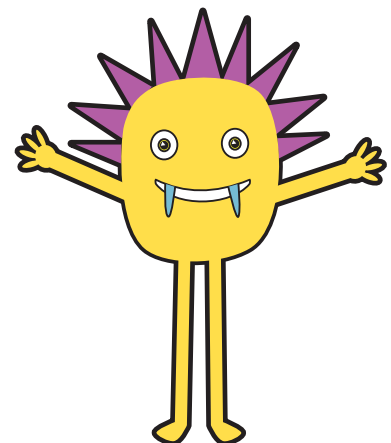
pon



hab

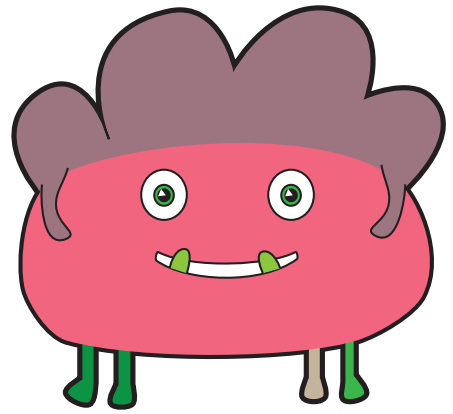


ulb

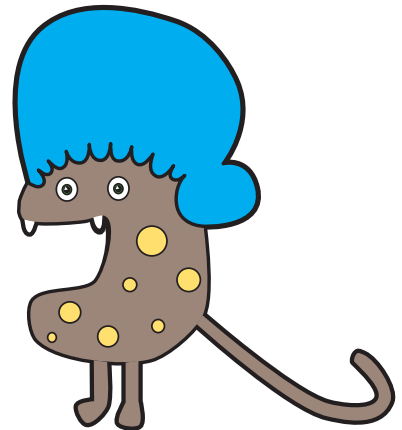




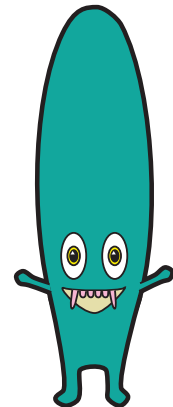
dack



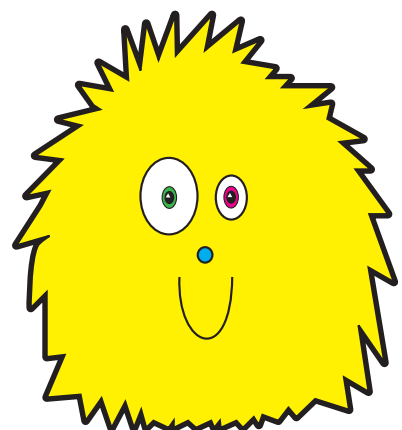
chob



nurt

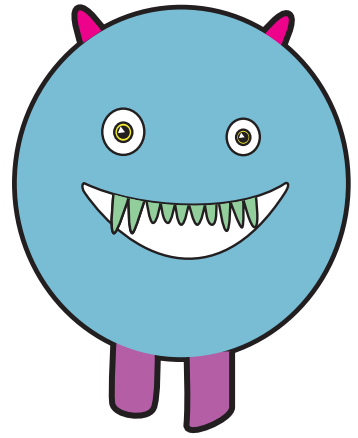


queet

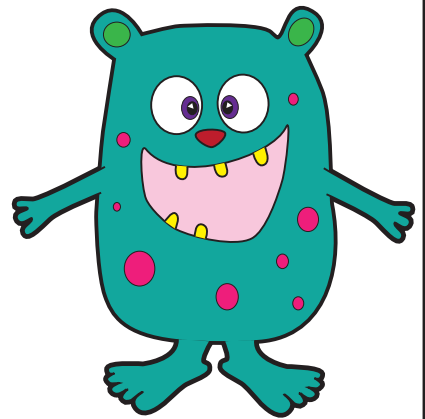




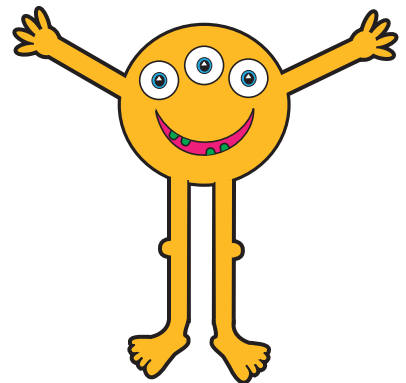
plap



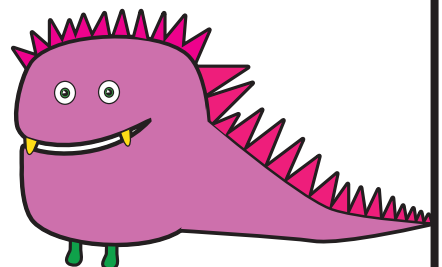
froin



melp



heent







shed

long

soil

chart



crab

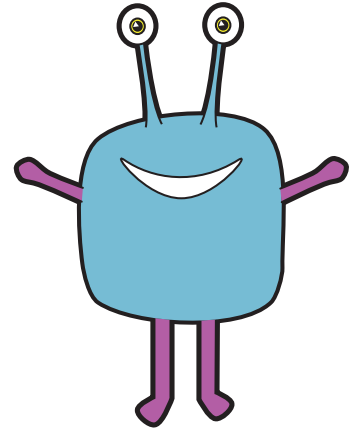
fresh

wink

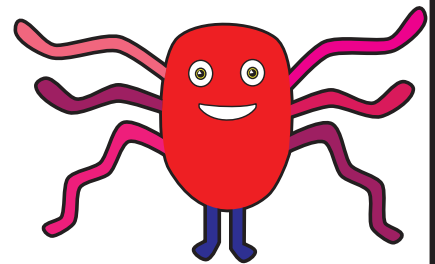
shuts



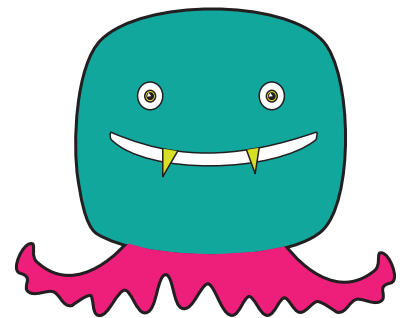
yair



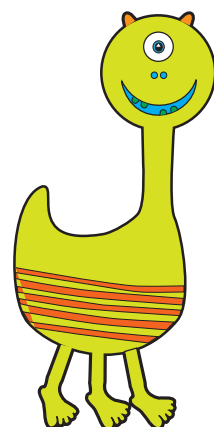
blies



keam

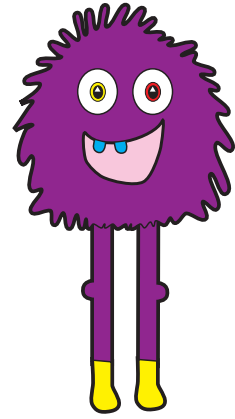


whape

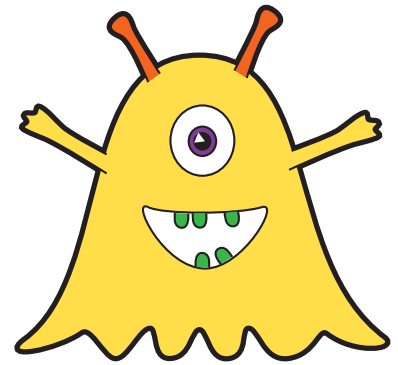




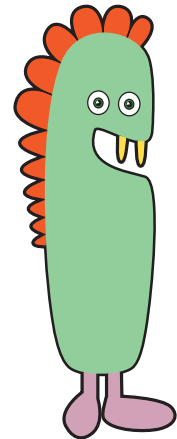
braft



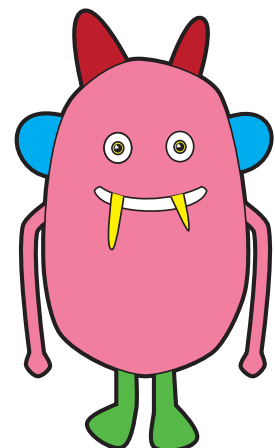
thrant



sprop



strow







law

glued

zoom

rice



grand

cloaks

scrap

strike



river

diving

beehive

midnight

**[BLANK PAGE]**

**Please do not write on this page.**

**[BLANK PAGE]**

**Please do not write on this page.**



Standards  
& Testing  
Agency

2015 Key Stage 1 Phonics screening check: pupils' materials

Print version product code: STA/15/7231/p ISBN: 978-1-78315-433-3

Electronic PDF version product code: STA/15/7231/e ISBN: 978-1-78315-460-9

### **For more copies**

Additional printed copies of this booklet are not available. It can be downloaded from [www.gov.uk/government/publications](http://www.gov.uk/government/publications).

© Crown copyright and Crown information 2015

### **Re-use of Crown copyright and Crown information in test materials**

Subject to the exceptions listed below, the test materials on this website are Crown copyright or Crown information and you may re-use them (not including logos) free of charge in any format or medium in accordance with the terms of the Open Government Licence v3.0 which can be found on the National Archives website and accessed via the following link: [www.nationalarchives.gov.uk/doc/open-government-licence](http://www.nationalarchives.gov.uk/doc/open-government-licence).

When you use this information under the Open Government Licence v3.0, you should include the following attribution: "Contains public sector information licensed under the Open Government Licence v3.0" and where possible provide a link to the licence.



### **Exceptions - third party copyright content in test materials**

You must obtain permission from the relevant copyright owners, as listed in the '2015 key stage 2 test materials copyright report', for re-use of any third party copyright content which we have identified in the test materials, as listed below. Alternatively you should remove the unlicensed third party copyright content and/or replace it with appropriately licensed material.

### **Third party content**

These materials contain no third party copyright content.

If you have any queries regarding these test materials contact the national curriculum assessments helpline on 0300 303 3013 or email [assessments@education.gov.uk](mailto:assessments@education.gov.uk).